

For a proper function and quality of our parts the fitting has to take place in authorised VW-workshops. In case of variances our specifications/guidelines count.

Auto Seikel GmbH and its staff don't guarantee on damages and their consequences (of any mind), which occur because of not noticing or ignorance on those specifications /guidelines.

There is no guarantee on incorrect fitting.

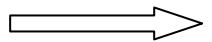
- We recommend the installation to let carry out only from VW-service partners.
- Vehicle height from the ground to the wheel arche over the wheel center.

FL :	FR :	mm
RL:	RR:	mm

○ **Front Axle**

Change suspension strut according to VW recommendation.
assemble new shock absorbers and springs

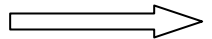
Look at installation plan I



- **Attention: don't use air gun!**
- Put enclosed distance spacers between above spring plate and upper spring bearing (**not necessary with shock absorbers from Monroe**)
- Reuse original protection cover and original fasteners for above spring plate.
- Install suspension strut according to VW recommendations.
- Tightening torque on the outside of the nut drive shaft VA

○ **Rear Axle**

Look at installation plan II



- **Attention:** Screwing out **complete** the **inside** transmission shaft.
- dismantle shock absorbers and springs
- remove both stop rubber buffer, if necessary remove existing rubber rests.
enlarge holes in bodywork 7 mm, put in M5 rivet nut
- screw on **aluminium spacer SF T5 HA 20, bolt with 6Nm tighten.**
- fix stop rubber buffer into spacer and check the right seat of the buffer.
- Fix new shock absorbers with above screw.
- **Attention please: replace the genuine rubber base of the spring, to SEIKEL 10 12 00 77(upper), and SEIKEL 10 12 00 76 (lower) according installation plan II**
- fit in the springs.
- Fix the new shock absorbers in arrow direction with screw M 14 x 102, (arrow points forwards)
put in the enclose distance spacer 14,5 x 27 x 4 between shock absorber and below shock absorber attachment.
- **Caution: lower shock fitting out of centre**
- Tighten fastening screws in standing position (car staying on ground)
- Transmission shaft inside attach
- Rear axle differential lowering with distance spacer SFHA15 T5 V (1x) front, SFHA15 T5 H (2x) behind and screws M10 x 125, M 12 x 115,
Screw on all screws with the original torque value of the vehicle manufacturer.
- **Check the clearance of the wheel/tyre combination. Clearance must be ensured under all operating conditions. If necessary you have to trim wheel house interior and the exhaust cover sheets at the rear axle.**
- Measuring suspension, **according enclosed data sheet**
- Adjusting headlights according to manufacturer's indications.
- Vehicle height from the ground to the wheel arche as well as measuring vehicle total weight.

FL :	FR :	mm
RL:	RR:	mm

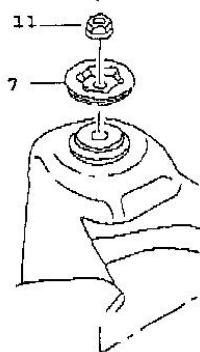
Total vehicle height:	mm
-----------------------	----

- Attaching enclosed sticker about total vehicle height in the view field of the driver.
- If necessary stick the sticker " changed suspension" in the service book and the data carrier of the vehicle.

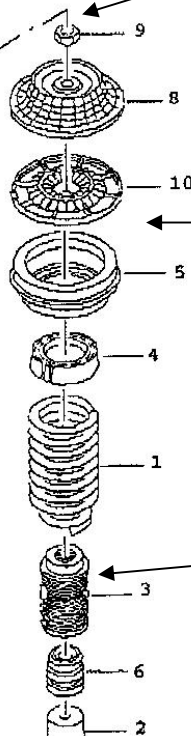
Attention: All screws have to be tightened with the vehicle manufacturer given torque.

Installation plan I VW T5 Front Axle

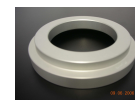
Attention: apply only nut
N 102 403 04



Attention: apply only nut
N 909 545 01



between pos. 5 and pos. 10
absolutely installing enclosed alu-
distance ring.

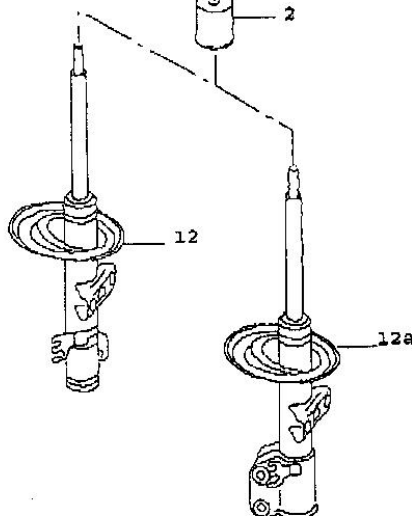


**Don't sheet these distance rings
with shocks (front axle) from
Monroe**

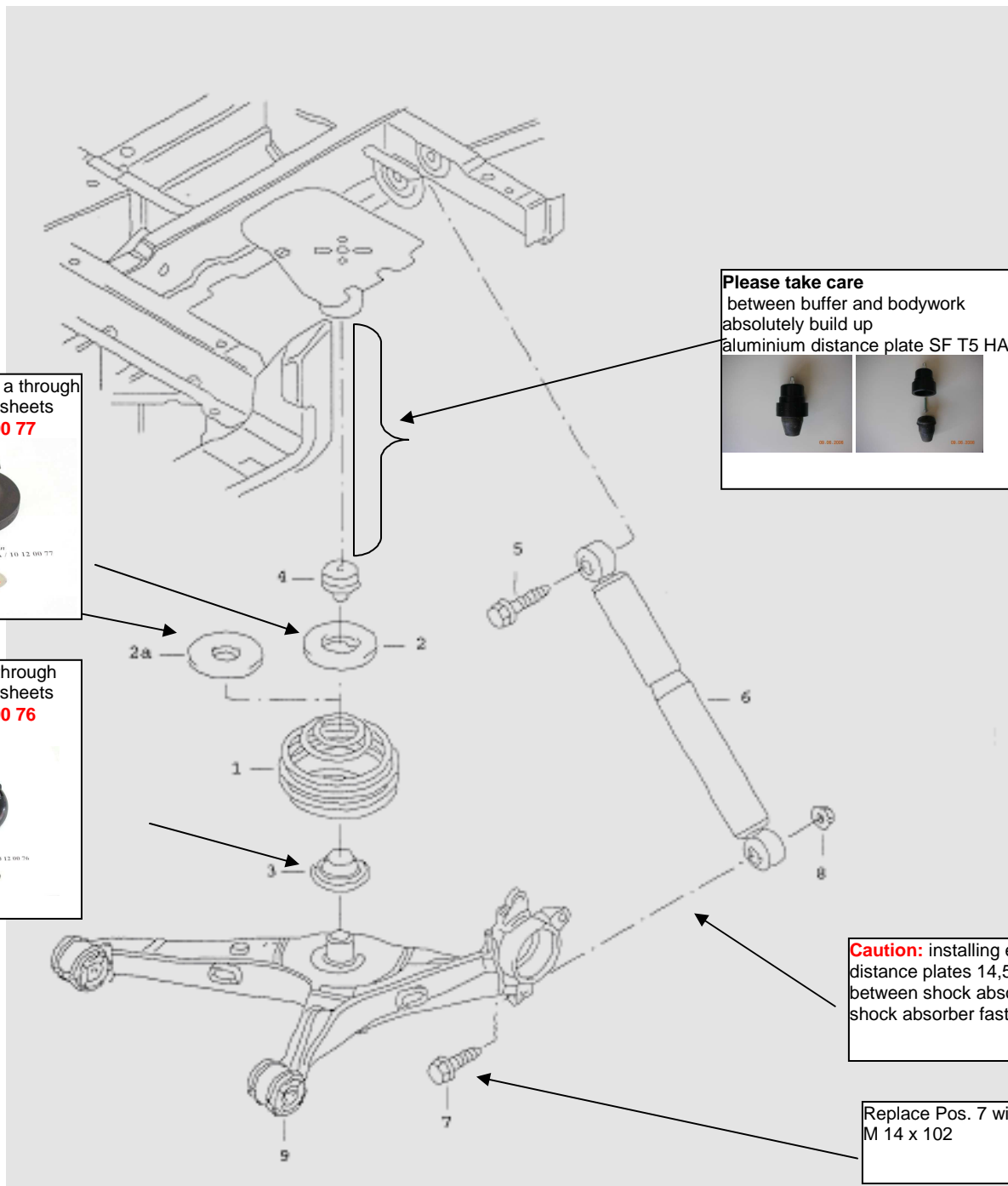
7H0 412 143 B is dropped by
Seikel suspension kit.
in the series till
VIN number 7H6080000

Caution: removing in the
need, abstracted not at all
models.

paying attention to a perfect seat,



Installation plan II
VW T5 Rear Axle



Replace Pos. 2 or 2 a through enclosed rubber sheets
Seikel 10 12 00 77



Federunterlage oben
Kennzeichnung: JNV-S11.149A / 10 12 00 77



Replace Pos. 3 through enclosed rubber sheets
Seikel 10 12 00 76



Federunterlage unten
Kennzeichnung: JNV-S11.150A / 10 12 00 76

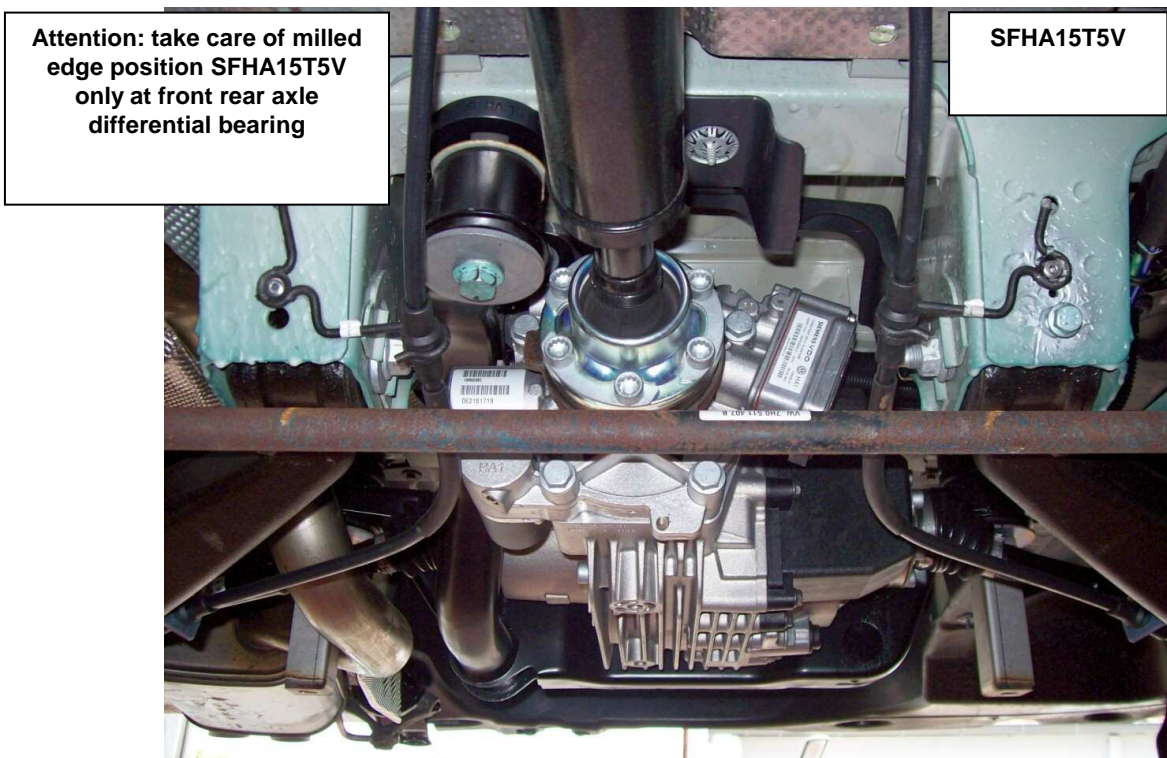
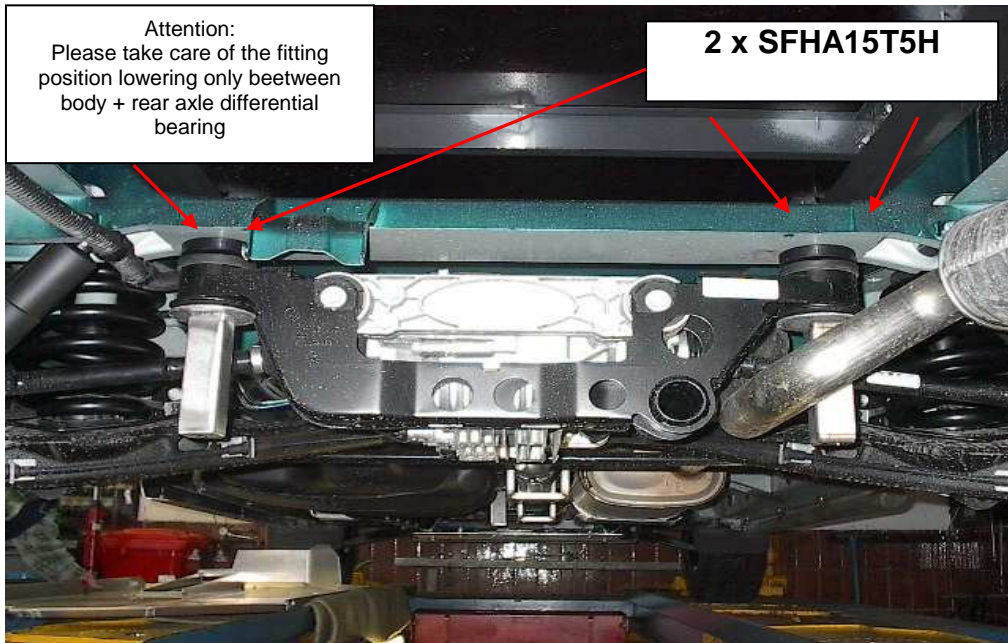


Please take care
between buffer and bodywork
absolutely build up
aluminium distance plate SF T5 HA 20



Caution: installing enclosed distance plates 14,5 x 27 x4 between shock absorber and shock absorber fastening

Replace Pos. 7 with screw M 14 x 102



Installation instruction Kit 2 (wheels)

- **causes the installation of Kit 1 (suspension Kit)**
- Fitting and heaving tyres according to manufacturer regulations
- tightening torque of the wheel screws is 180 Nm.
- Correcting tyre air pressure
- Check speedo, a speedo adjustment is necessary. Possible only here in our house.